



**ZEO, Inc. The Leader in Natural Zeolite Products and Technology**

P.O. Box 2353 / McKinney, TX 75070 US

http://www.zeoinc.com

PHONE: +1-972-542-0053

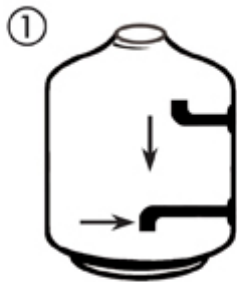
FAX: +1-972-542-0211

Email: clino@zeoinc.com

# Installation

## Installation and Start-up Instructions

Follow these instructions to fill sand filters with ZeoSand. See [ZeoSand Application Rates](#) to determine the amount of media needed for your filter.



### Step 1

- Determine the amount of media required for your filter based on the ZeoSand replacement ratio.
- Empty filter and make any needed repairs.



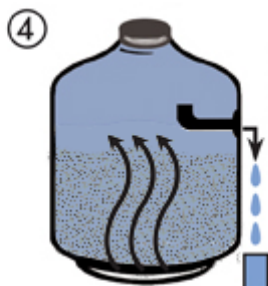
### Step 2

- Fill filter half-way with water.



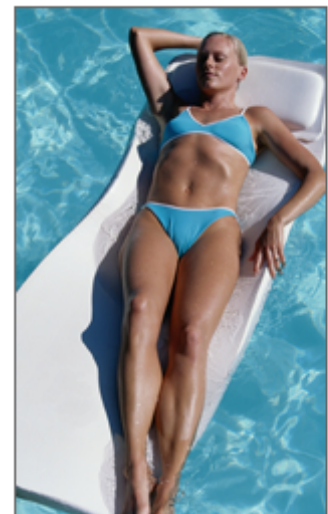
### Step 3

- Slowly pour ZeoSand into filter allowing all media granules to be thoroughly wetted.
- Make sure no media enters lateral piping assembly.



### Step 4

- Close filter and backwash until backwash water is clear.
- Allow ZeoSand to settle for 5 minutes.
- Backwash for an additional 2 minutes.
- Turn filter on.



ZeoSand traps more dirt and smaller particles than sand, noticeably improving water clarity.



ZeoSand, natural zeolite sand replacement, makes water crystal clear (DE-like clarity).

Refreshing ZeoSand →