

Rotational Series 375

R-375

Standard Features

- ADA Compliant Pool Lift
- Stainless Steel Construction
- Powder Coat Finish
- Lift Capacity - 375 lbs.
- Battery Powered 24 volt system
- User Friendly controls
- Lifetime Structural Warranty
- Arm Rests
- Foot Rest
- Safety Seat Belt
- UPS Packaging for easy shipping
- Can be used for spas and pools
- Clears obstacles up to 10" tall
- UV Resistant
- Includes Battery Charging Station
- Sleeve Anchor System (Optional)
- Rotates to the right 360 degrees or to the left 360 degrees
- Works with most existing anchors 1.9" x 6" deep
- Adapter optional to fit other anchors
- Key Lock Out System



* Lift Patent Pending

www.GlobalLiftCorp.com

Rotational Series Options



Protective Cover



Extra Battery



LIFT CORP

ISO 9001 CERTIFIED

Global Lift Corp. Products are Laboratory Tested to meet ADA Standards

2013

New ADA Laws

- All of our lifts are compliant with the New ADA Laws
- All swimming pools in the USA that fall under Title II or Title III need to comply with the new laws.

Title II (Public Industry) municipal pools, school pools, government owned pools, etc.

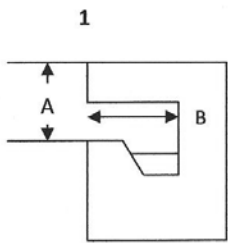
Title III (Private Industry) place of recreation, place of lodging, which addresses public accommodations

- Existing pools shall become compliant with accessibility by January 31, 2013
- There are tax incentives available
See details at www.GlobalLiftCorp.com

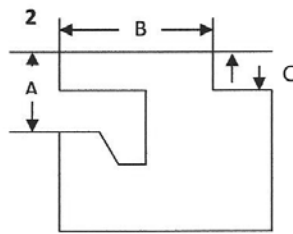
R-375

LIFT CONFIGURATOR

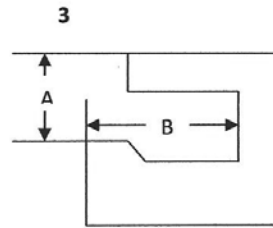
PLEASE CHOOSE WHICH APPLICATION YOUR POOL GUTTER BEST REPRESENTS



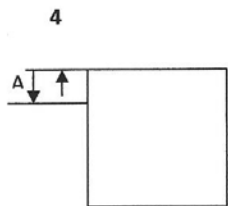
Fully Recessed Gutter



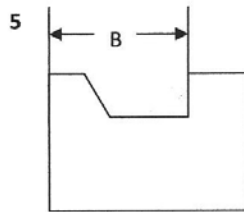
Fully Recessed Gutter
W/ parapet



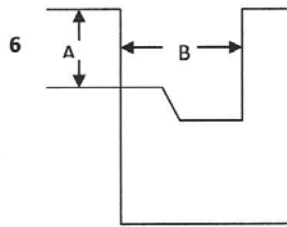
Partially Recessed
Gutter



Gutter less Deck



Flush Gutter & Deck
With or without bull
nose



Rollout Gutter

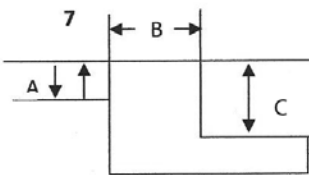
LEGEND

A = Distance from pool deck to water line
B = Width of Gutter
C = Width of Curb
D = Height of Curb

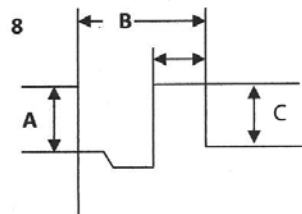
LEGEND MEASUREMENTS MIN/MAX

A = 0" - 12"
B = 0" - 28"
C = 0" - 10"

NOTE: If your pool doesn't fall within these measurements, please contact your dealer for assistance.



Above Ground Pool



Gutter System with Curb

Dealer: