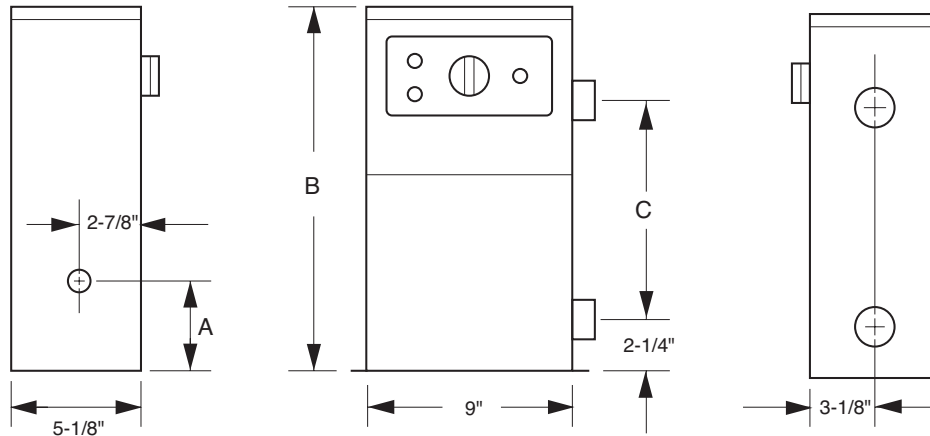
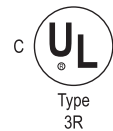


# Technical Data

## Raypak Electric Spa Heater



MODEL	BTUH (INPUT)	A	B	C	Amp Draw	GFCI Size
552	18,767	3-7/8"	16"	8"	23	30
1102	37,534	10-7/8"	23"	15"	46	60



## SpaPak 552 and 1102 Standard Features

### All models

- Brass Headers**  
 Brass headers prevent rust stains from harming your pool or spa's surface, giving you years of trouble-free swimming pleasure. They also allow for a corrosion free connection to your spa plumbing, making any future servicing a snap.
- Copper Water Vessel**  
 The Raypak Electric Spa heater has a completely non-ferrous waterway. The cast brass headers are connected with an all copper water tank. This ensures that the spa water only comes in contact with a rust free environment. This helps keeps your spa rust stain free.
- 1-1/2" Water Connections**  
 Every Raypak Electric Spa heater comes standard with 1-1/2" NPT male connections to make your installation secure and effortless. No other special connections are required, such as current collectors or heat sinks.
- Heating Element**  
 The heart of any electric heater is the heating element. The Raypak Electric Spa heater comes with a robust, incoloy sheathed heating element. The top of the element is 3/16" stainless steel, again, ensuring a rust free environment.
- Contactors**  
 Raypak Electric Spa heaters use commercial grade components. Take one look at the heavy duty power contactor and you know this heater is built to last.
- Safety**  
 Inside every Raypak Electric Spa heater is a built-in device to prevent overheating. In the event the heater is energized when the water flow is insufficient, a resettable high limit will prevent the heater from operating in an unsafe condition.
- 240v Operation**  
 Both of the Raypak Electric Spa heaters operate with 240v single phase power. The model 552 draws about 23 amps @240v and the model 1102 draws about 46 amps @240v.
- Energy-Efficient**  
 Energy-smart Raypak heaters consistently achieve the highest efficiency ratings. They exceed all federal and state standards.

### Quality assurance

- ISO 9001**  
 We are proud to be an ISO 9001 registered manufacturing plant. It's one more reason why Raypak is number one in the heater industry today.
- End-of-Line Test**  
 Every Raypak Electric Spa heater is test-fired before it is put in the carton. This ensures that your heater will work right out of the box and continue to give you years of trouble-free operation.
- UL Listed**  
 The Raypak Electric Spa heaters are listed with UL and cUL.

Model	Water Temperature Rise in °F/Hour				
	5°	10°	15°	20°	25°
Gallons of Water					
552	450	225	150	113	95
1102	900	450	300	225	190

\*Note: Assumes covered and insulated spa.

In keeping with its policy of continuous progress and product improvement, Raypak reserves the right to make changes without notice



## Swimming Pool and Spa Heating Products

