

# Boards & Stands Selector



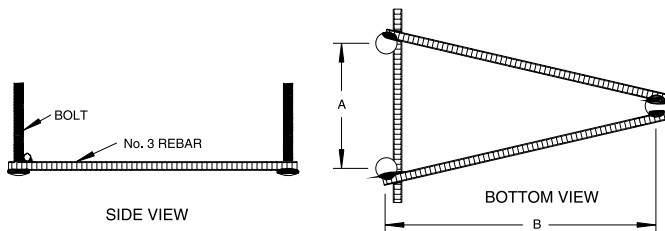
2/3 M Deck Level   Cantilever   Deluxe 1 & 3 M   D-Lux   Econoline 1M   Flyte-Deck II   Frontier II   Steel Meter 1/2, 3/4, 1M   Supreme   U-Frame

Eureka			•		•					
Fibre-Dive						•				•
FreeStyle		•		•		•			•	
Frontier II							•			
Frontier III		•				•		•	•	•
Frontier III Commercial	•		•		•			•		•
Frontier IV								•*		•*
Glas-Hide		•							•	
HipHop		•		•			•		•	
Olympian	•	•	•		•			•	•	•
Swim Club	•		•		•			•		•

\*Frontier IV boards require a special part number stand – call factory for assistance

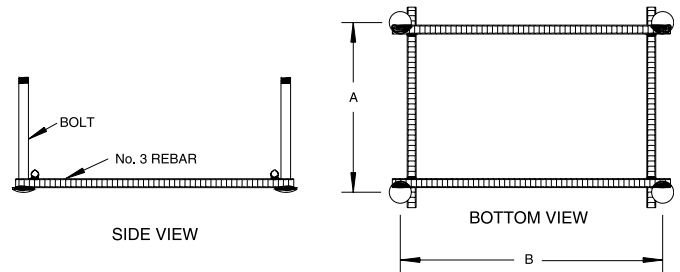
## Identification Guide

### Three-Bolt Jigs



Jig Type	Part Number	A	B	Bolt
6' Flyte Deck	71-209-700-SS	8.5"	14.00"	1/2"x 6" Carriage
8' Flyte Deck Old	71-209-702-SS	8.5"	22.00"	1/2"x 6" Carriage
8' Flyte Deck New	71-209-704-SS	8.5"	24.00"	1/2"x 6" Carriage
10' Flyte Deck	71-209-703-SS	8.5"	31.00"	1/2"x 6" Carriage
6' & 8" Frontier II Spring	69-209-227-SS	3.25"	6.00"	5/8"x 6" Carriage

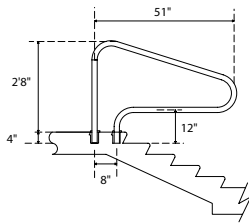
### Four-Bolt Jigs



Jig Type	Part Number	A	B	Bolt
656/658 Fiberglass	69-209-007-SS	14.00"	14.00"	1/2"x 7" Carriage
606/608 Steel	69-209-006-SS	12.00"	12.00"	1/2"x 6" Carriage

# Rail Configurations

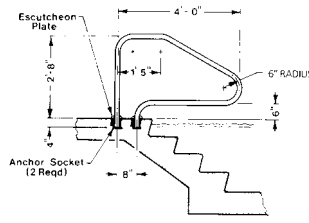
## DMS-100



Model #	Description
DMS-100	Center Grab Rail
DMS-100S	60" Center Grab Rail

NOTE: Add A to part number for .049", add B for .065" wall thickness

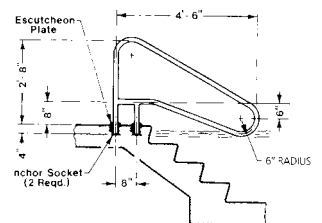
## DMS-101



Model #	Description
DMS-101	Center Grab Rail

NOTE: Add A to part number for .049", add B for .065" wall thickness

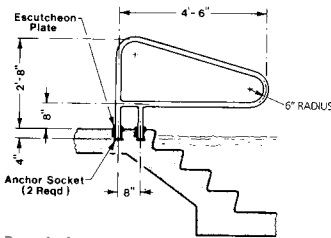
## DMS-102



Model #	Description
DMS-102	Center Grab Rail

NOTE: Add A to part number for .049", add B for .065" wall thickness

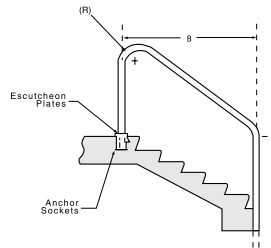
## DMS-103



Model #	Description
DMS-103	Center Grab Rail

NOTE: Add A to part number for .049", add B for .065" wall thickness

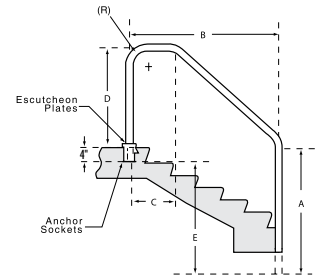
## 2-Bend



Model #	Description	A	B
2HR-4	4' 2-BEND	26"	4'-0"
2HR-5	5' 2-BEND	36"	5'-0"
2HR-6	6' 2-BEND	46"	6'-0"

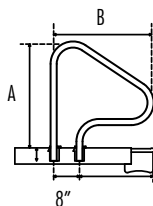
Add -.049 for .049", -.065 for .065" wall thickness. Add -1 to part number for extended length Example: 2HR-5-049 5' 2-bend rail, .049 wall  
Extended leg: 2HR-5-049-1

## 3-Bend



Model #	Description	A	B	C
3HR-4	4' 3-BEND	26"	4'-0"	18"
3HR-5	5' 3-BEND	26"	5'-0"	18"
3HR-6	6' 3-BEND	26"	6'-0"	18"

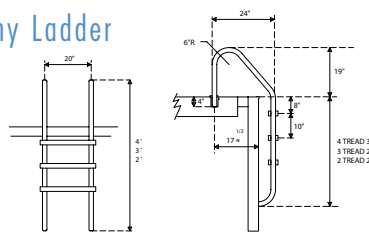
## Figure 4



Model No.	Description
F4H-100	Figure 4 Hand Rail .065 Wall Thickness
F4H-101	Figure 4 Hand Rail .049 Wall Thickness
F4H-102	Figure 4 Hand Rail

NOTES:  
Also available with adjustable front leg.  
Escutcheon plates and anchor sockets sold separately. See pages 90-94 for options.

## Economy Ladder



Econoline Model	Elite Model	Description
VLLS-102E	VLLS-102S	2-step ladder
VLLS-103E*	VLLS-103S	3-step ladder
VLLS-104E	VLLS-104S	4-step ladder

\*Marine Grade, add -MG to part number when ordering.  
NOTES: Frames extend 6 1/2" from the pool wall. Frame is secured to pool deck with two anchor sockets on 20" centers. Also available in SealedSteel. For plastic steps, anchors must be set at 19". Lower end of frame is bent to meet pool wall and fitted with two white rubber bumpers.

## Got salt? No problem with Salt Pool Rails



Model	Description
DMS-100A	Deck Mounted Stair Rails
DMS-101A	Deck Mounted Stair Rails
DMS-102A	Deck Mounted Stair Rails (.049" Wall)
F4H-102	Figure 4 Hand Rail (.049 Wall) -pair
VLLS-103E	3-Step Ladder

NOTE: Add -VW for White, -VG for Silver Gray, -VT for Taupe  
Part numbers include matching escutcheons